

## Tecla inalámbrica RF, 1 Efecto Smart House, Negro

### Datos Técnicos

#### Características Eléctricas

Tensión de Entrada	3 Vdc
Frecuencia	433 MHz
Temperatura de Trabajo	-10 ~ 70 °C

#### Características Físicas

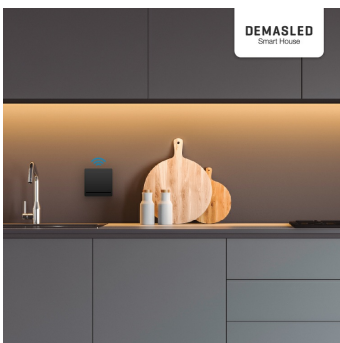
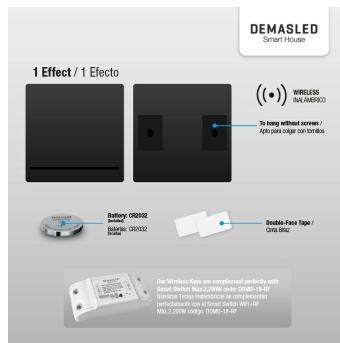
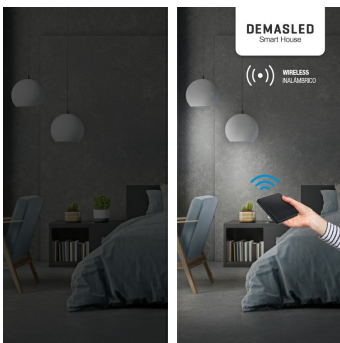
Instalación	Superficie
Material	ABS
Color de Carcasa	Blanco
Tipo de batería	CR2032
Largo	86 mm
Ancho	86 mm
Alto	15 mm

#### Características Generales

Compatibilidad	DOMO-18-RF
Uso	Interior

#### Características Ópticas

Dimerizable?	No
--------------	----



Algunas imágenes pueden ser ilustrativas

### Certificaciones

# DEMASLED

Ficha  
Técnica

Tecla inalámbrica RF, 1 Efecto Smart House,  
Negro

Cód. domo-32ne-  
a2

**DEMASLED**  
Smart House

**Specifications | Especificaciones**  
Model | Modelo: DOMO-32NE  
Input | Entrada: CR2032  
Working Frequency | Frecuencia: 433MHz  
Modulation | Modulación: FSK  
Working Temperature | Temperatura de Trabajo: -10°C~70°C

433MHz

Other Keys /  
Otras Teclas

x2 Effects / x2 Efectos

x3 Effects / x3 Efectos

86mm / 3.38in

15mm / 0.59in

86mm / 3.38in

Detailed description: The image shows a technical specification sheet for a black, square-shaped wireless remote control key. The key is shown from a top-down perspective and a side profile. Dimensions are provided in millimeters and inches: width is 86mm (3.38in), height is 86mm (3.38in), and thickness is 15mm (0.59in). The key features a single horizontal line across its face. To the right, there are two sets of alternative key designs: one with two effects and one with three effects. The DEMASLED Smart House logo is in the top right corner, and the frequency 433MHz is highlighted in a box. The working temperature range is -10°C to 70°C.